

# THE CALL2RECYCLE PROGRAM JOURNEY

What happens to your batteries & cellphones when you recycle?



IT STARTS WITH  
**COLLECTIONS**



You can find  
convenient drop-off  
locations at leading  
retailers & recycling  
centers.

**Call2Recycle collects and recycles:**

- Nickel Cadmium (Ni-Cd)
- Nickel Metal Hydride (Ni-MH)
- Nickel Zinc (Ni-Zn)
- Lithium Ion (Li-Ion)
- Small Sealed Lead Acid (SSLA/Pb)
- Single-Use/Alkaline
- Lithium Primary
- Cellphones (collects only)

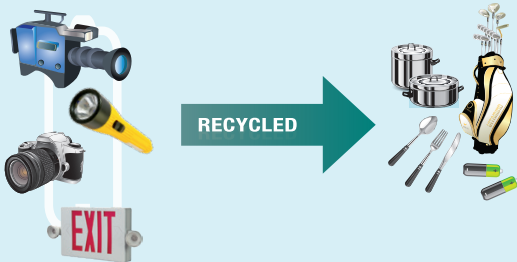
**BATTERY & CELLPHONE SORTING**

Collected batteries and cellphones are sorted  
according to weight and battery or device type.

**RECHARGEABLE BATTERIES**

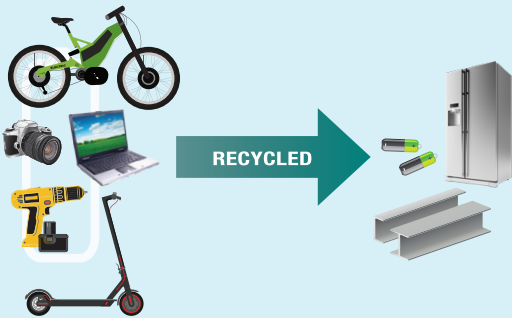
**Nickel (Ni)**

Used Ni-Cd, Ni-MH and Ni-Zn batteries are recycled into new products such as silverware, pots & pans, golf clubs and new batteries.



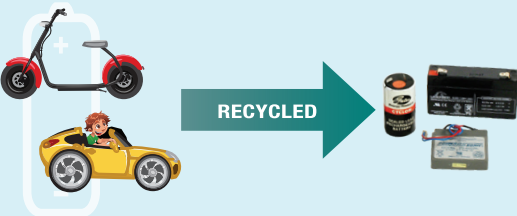
**Lithium (Li)**

Used Li-Ion rechargeable batteries are recycled into steel, stainless steel and new batteries.



**Lead (SSLA/Pb)**

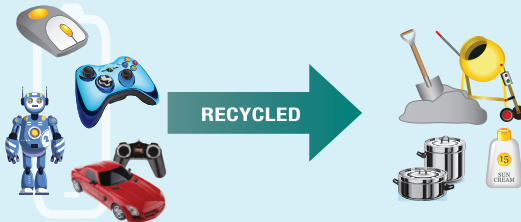
Used SSLA/Pb batteries are recycled into new Pb-based batteries.



**SINGLE-USE BATTERIES**

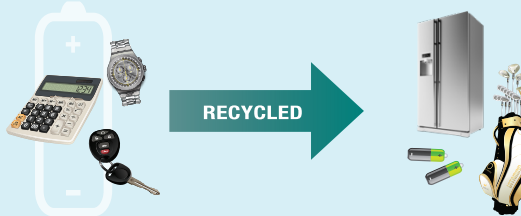
**Alkaline**

Used alkaline batteries are recycled into steel and new products such as sun screen and concrete aggregate.



**Lithium Primary**

Used Li-based primary batteries are recycled into new products such as silverware, stainless steel, golf clubs and new batteries.



**CELLPHONES**

**\*Refurbished**

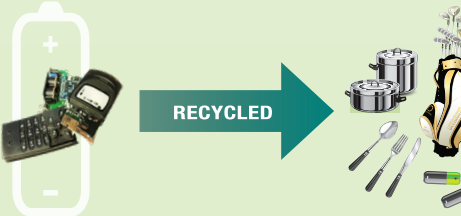
Cellphones are refurbished or resold with proceeds helping to fund the recycling and education program.



\*Call2Recycle sends all collected cellphones to a third party to be refurbished.

**\*Recycled**

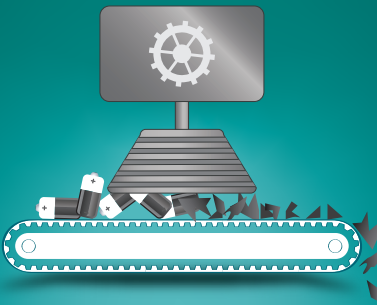
Cellphones unable to be refurbished are wholly recycled and manufactured into new products.



\*Call2Recycle sends all collected cellphones to a third party to be recycled.

**BATTERY PROCESSING:**

Processors at the recycling plant extract chemicals and metals to be used in the manufacture of new products.



**CELLPHONE PROCESSING:**

Processors refurbish old cellphones and return them to market or recycle their components.

Learn more at [call2recycle.org](https://call2recycle.org) and find a drop-off location near you at [call2recycle.org/locator](https://call2recycle.org/locator)

**call2recycle®**